

MAK MARINE TECHNOLOGY



MARINE ELECTRICAL SYSTEM



ABOUT US

MAK MARINE TECHNOLOGY WAS ESTABLISHED IN 2023 TO COMMISSION, DESIGN, AND MANUFACTURE ALL AUTOMATION SYSTEMS IN THE MARITIME SECTOR. MAK MARINE OPERATES ACROSS ALL FIELDS USING THE RULES OF ALL CLASSIFICATION SOCIETIES SUCH AS DNV-GL UNTIL THE FINAL DELIVERY OF ON-SITE WORK FROM THE DESIGN FIELD. MAK MARINE COMPLIES WITH ALL THE RULES REQUIRED BY THE MARITIME SECTOR. OUR COMPANY HOLDS A LEADING POSITION IN THE MARITIME SECTOR. IN PARTICULAR, WE UNDERTAKE THE ELECTRICAL WORK OF SHIPS IN SHIPYARDS, PROVIDING STRONG AND RELIABLE ELECTRICAL SYSTEMS FOR MODERN MARINE VEHICLES. WITH EXPERIENCE AND EXPERTISE, WE OFFER COMPREHENSIVE SOLUTIONS IN SHIP ELECTRICAL SYSTEMS. WITH A CUSTOMER-FOCUSED APPROACH, WE CONTINUE TO MAINTAIN OUR LEADERSHIP IN THE SECTOR BY PRODUCING SOLUTIONS SPECIFIC TO EACH PROJECT.

VISION : TO BECOME A PIONEERING COMPANY GLOBALLY RECOGNIZED FOR CUSTOMER SATISFACTION, AS A TECHNOLOGY-DRIVEN, INNOVATIVE, AND TREND-SETTING FAMILY IN AN EVOLVING INDUSTRY EVERY DAY.

MISSION : WE ARE A COMPANY THAT IS INNOVATIVE, ALWAYS OPEN TO DEVELOPMENT, AND PROVIDES SERVICES WITH DURABLE PRODUCTS, MOST IMPORTANTLY, ALWAYS ENSURING CUSTOMER SATISFACTION.



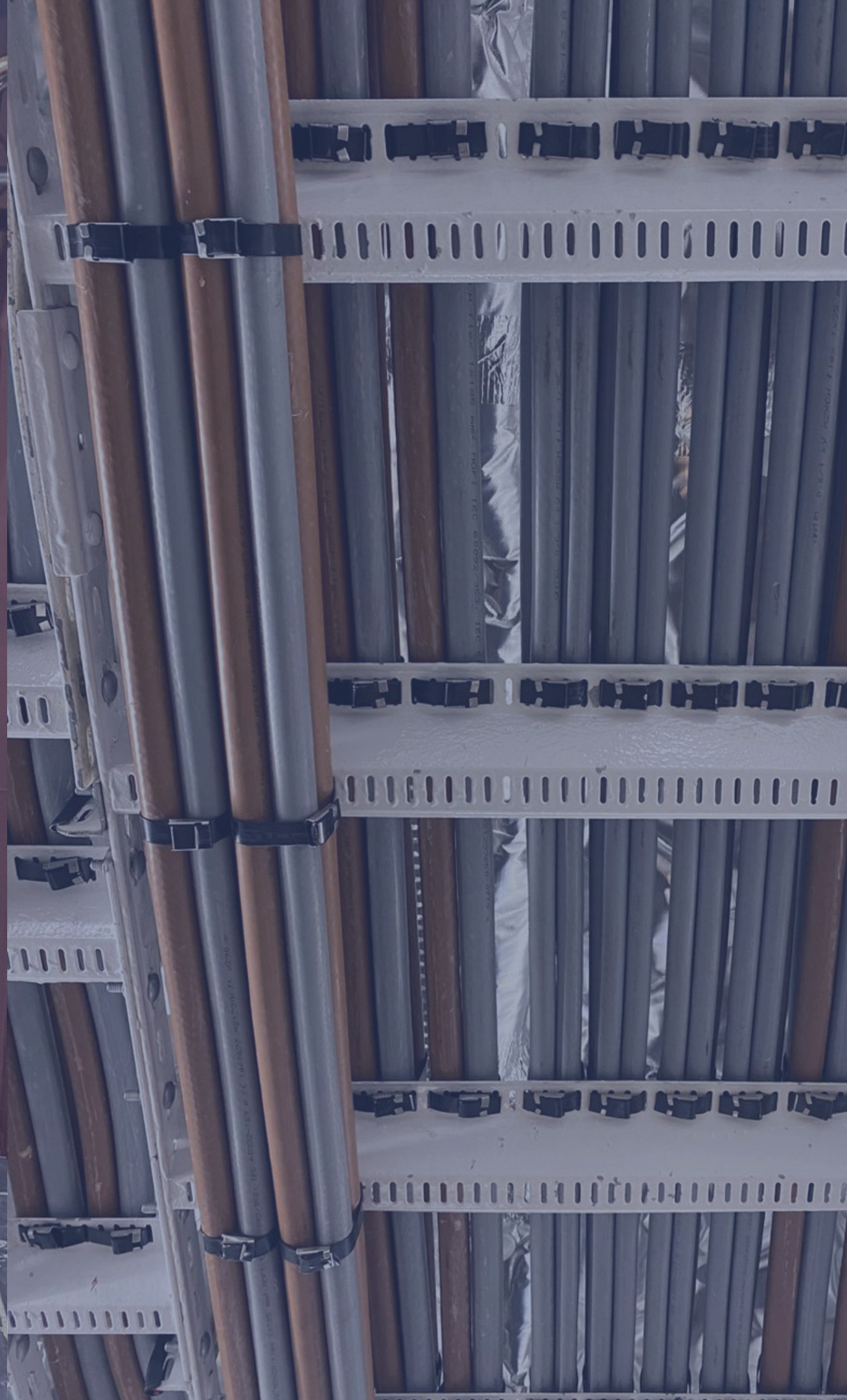
OUR SERVICES

SHIP ELECTRICAL MAINTENANCE AND REPAIR

MAINTENANCE AND REPAIR OF SHIP ELECTRICAL SYSTEMS ARE CRUCIAL TO ENSURING THE VESSEL OPERATES SAFELY AND EFFICIENTLY. REGULAR INSPECTION, MAINTENANCE, AND NECESSARY REPAIRS OF ELECTRICAL SYSTEMS ENSURE UNINTERRUPTED SERVICE DURING SHIP OPERATIONS.

SHIP WIRING

WIRING IN SHIP ELECTRICAL SYSTEMS PLAYS A CRITICAL ROLE IN ENSURING THE SAFE AND EFFICIENT OPERATION OF ALL ELECTRICAL SYSTEMS ON BOARD. DUE TO THE UNIQUE ENVIRONMENTAL CONDITIONS AND STRINGENT SAFETY REQUIREMENTS SPECIFIC TO SHIPS, WIRING PROCESSES MUST BE CAREFULLY PLANNED AND EXECUTED.



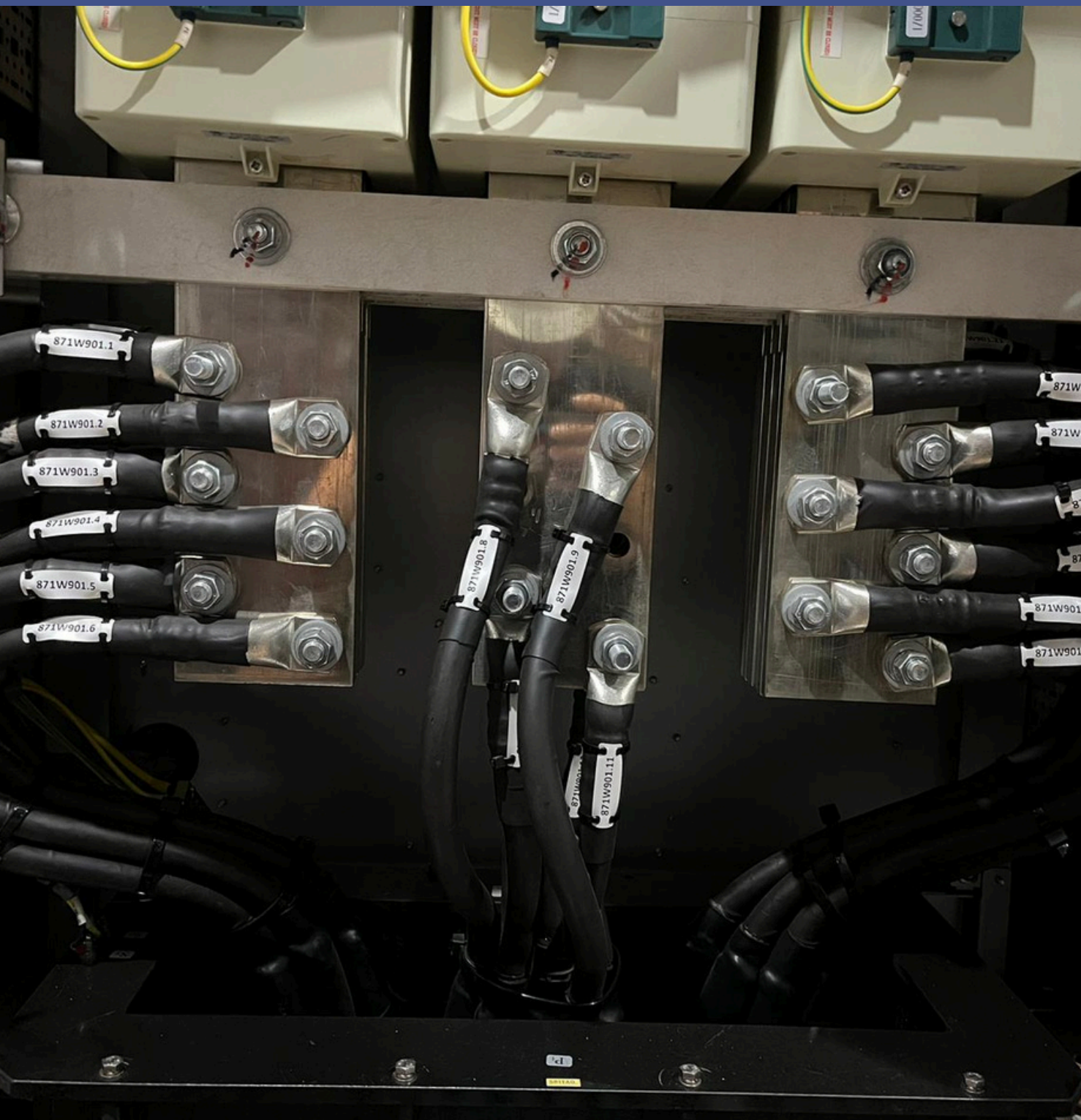
ELECTRICAL CONNECTIONS

ELECTRICAL CONNECTIONS IN SHIP SYSTEMS ARE CRUCIAL FOR ENSURING THE SAFE, EFFICIENT, AND UNINTERRUPTED OPERATION OF THE VESSEL'S ELECTRICAL SYSTEMS. CONNECTION TASKS MUST BE CARRIED OUT CAREFULLY DURING THE INSTALLATION OF POWER DISTRIBUTION, CONTROL SYSTEMS, AND COMMUNICATION NETWORKS.

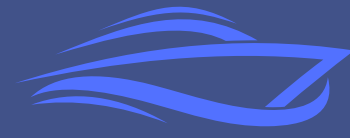
PLC FAILURE

FAILURES IN PROGRAMMABLE LOGIC CONTROLLERS (PLCS) IN SHIP ELECTRICAL SYSTEMS CAN LEAD TO SIGNIFICANT DISRUPTIONS IN AUTOMATION SYSTEMS ONBOARD. SINCE PLCS ARE RESPONSIBLE FOR THE AUTOMATIC CONTROL OF VARIOUS SYSTEMS ON THE SHIP, IT IS CRUCIAL TO DIAGNOSE AND RESOLVE SUCH FAILURES QUICKLY AND EFFECTIVELY.

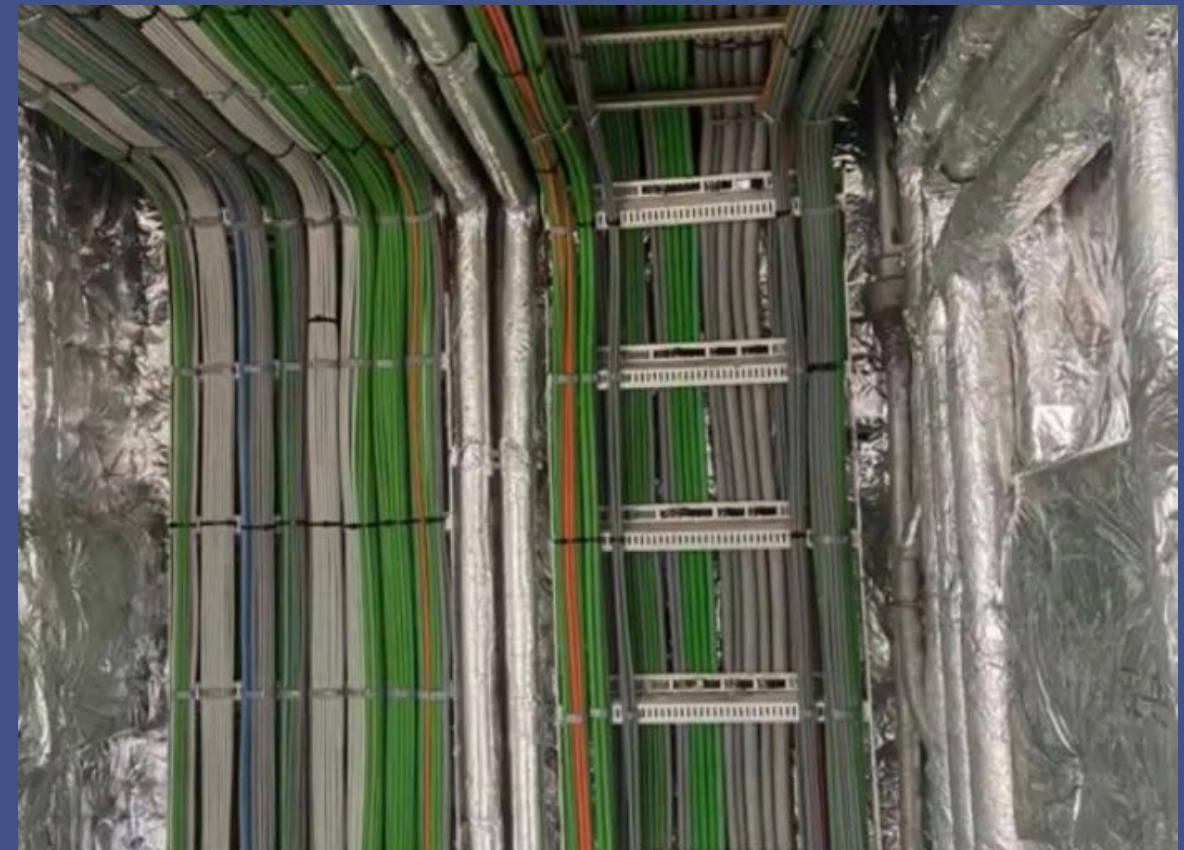
ELECTRICAL CONNECTIONS



SHIP WIRING



MAK MARINE
TECHNOLOGY





NB 1120

ACTA MARINE

VESSEL TYPE

CONSTRUCTION SERVICE OPERATION VESSEL

OWNER

ACTA MARINE B.V / NETHERLANDS

DESIGNER

ULSTEIN DESIGN & SOLUTIONS B.V / NORWAY

CLASS

DNV, 1A_x, SF, E0, OFFSHORE SERVICE VESSEL, STRENGTHENED (DK, HA), DYNPOS(AUTR), NAUT (OC), LFL FUELLED, CLEAN(DESIGN), BWM(T), COMF-V(2), COMF-C(2), BIS, RECYCLABLE, BATTERY(POWER), ER(SCR, TIER III), SPS, WALK2WORK.

LENGTH OVERALL (M) : 89,6

BREADTH (M) : 19,2



VESSEL TYPE

**BATTERY POWERED FULL ELECTRIC CAR AND PASSENGER
FERRY**

OWNER

FJORD1 ASA / NORWAY

DESIGNER

HAV DESIGN / NORWAY

CLASS

**DNV GL: + 1A - E0 - R4(NOR) - CAR FERRY B - BATTERY
(POWER) - SHORE POWER -RP(2,50%)***

LENGTH OVERALL (M) : 84

BREADTH (M) :16.3

NB 1114

FJORD1 ASA



NB 1123

ACTA MARINE

VESSEL TYPE

CONSTRUCTION SERVICE OPERATION VESSEL

OWNER

ACTA MARINE B.V / NETHERLANDS

DESIGNER

ULSTEIN DESIGN & SOLUTIONS B.V / NORWAY

CLASS

DNV, 1A_x, SF, E0, OFFSHORE SERVICE VESSEL, STRENGTHENED (DK, HA), DYNPOS(AUTR), NAUT (OC), LFL FUELLED, CLEAN(DESIGN), BWM(T), COMF-V(2), COMF-C(2), BIS, RECYCLABLE, BATTERY(POWER), ER(SCR, TIER III), SPS, WALK2WORK.

LENGTH OVERALL (M) : 89,6

BREADTH (M) : 19,2



VESSEL TYPE

BATTERY POWERED FULL ELECTRIC CAR AND PASSENGER FERRY

OWNER

FJORD1 ASA / NORWAY

DESIGNER

HAV DESIGN / NORWAY

CLASS

DNV GL: + 1A - E0 - R4(NOR) - CAR FERRY B - BATTERY (POWER) - SHORE POWER -RP(2,50%)*

LENGTH OVERALL (M) : 84

BREADTH (M) :16.3

NB 1113

FJORD1 ASA



TUG

NB 158

**'TRAKTOR V3900-
DF**

NB 169

P&O REYSER

NB 171

UZMAR®



NB 127
LNG SHIPPING

LNG BUNKER TANKER

RMK MARINE